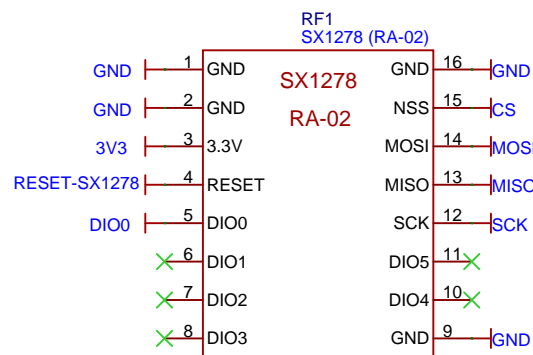
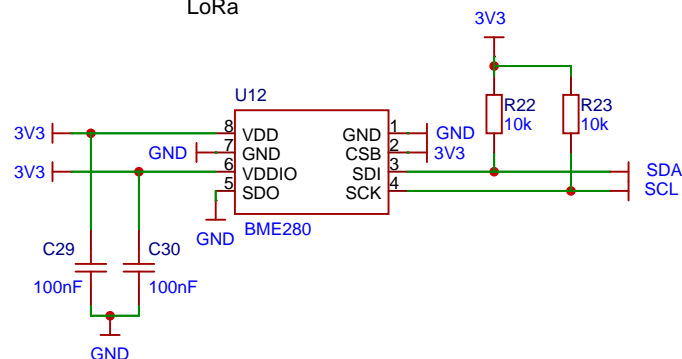
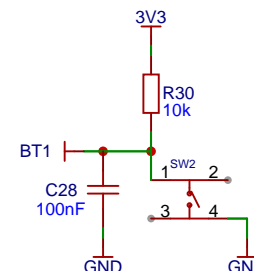
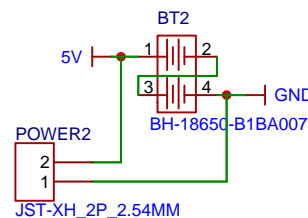
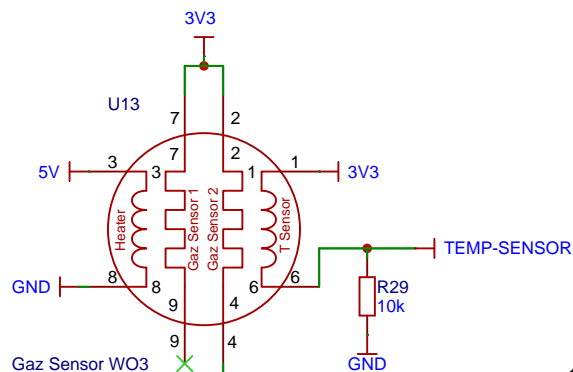


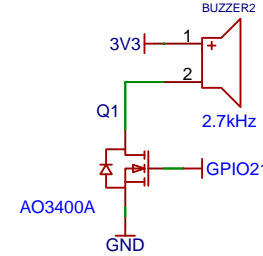
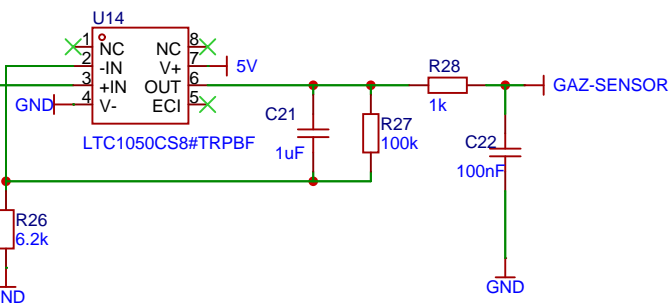
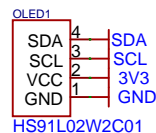
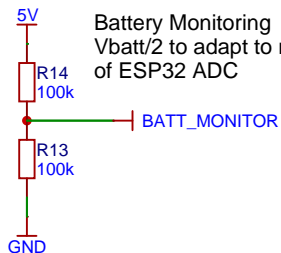
ESP32C3 Super Mini




LoRa



Battery Monitoring
Vbatt/2 to adapt to max 3.3V
of ESP32 ADC



Schematic	Schematic2			Update Date	2024-12-17
				Create Date	2024-12-17
Page	P1			Part Number	
Drawn		gaz-sensor-ptp-iss			
Reviewed	INSA Toulouse				
		VER	SIZE	PAGE	1 OF 1
		V0.1	A4	PTP ISS	